

Streamvault SV-300E

All-in-one security appliance

The Streamvault™ SV-300E all-in-one security appliance helps you move to a unified system combining video surveillance, access control, intrusion, and communications more efficiently. It combines all the capabilities you need to secure a small site in a single device, simplifying both installation and maintenance.

Guaranteed performance

up to
> **32**
cameras

up to
> **100**
readers

up to
> **32**
ALPR cameras

up to
> **48TB**
storage



Key features

Turnkey appliance with Genetec™ Security Center pre-installed

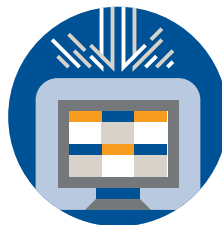
Local recording and monitoring of video, access control, and other security events

3-year hardware warranty with 1-year advance replacement

Benefits



Speed up your deployment – Get your security system up and running quickly and efficiently with Security Center pre-installed and built-in wizard-based tools to configure your system.



Protect your security system – Streamvault appliances help you build a resilient security system that protects your data and operations. Our cyber security experts stay vigilant on evolving threats and help identify and address new vulnerabilities promptly.



Reduce your system's footprint – With Security Center and the SV-300E, you can consolidate video, access control, intrusion detection, and other security systems on a single device.

Applications

Retail

Standardize your processes across your entire chain. The Streamvault SV-300E appliance lets you record and monitor video locally, and makes it easy to connect remote sites with a centralized location.

Education

The Streamvault SV-300E series lets you monitor entries and exits with unified video and access control, so you can keep staff and students safe across your school.

Banking

Combine video, access control, and intrusion systems in a single platform and enhance security across your installations.

Technical specifications

OS
Windows 10 Enterprise LTSC

Processor
Intel® Core™ i5

Memory
16 GB DDR4

Ethernet
Onboard 1 Gb network adapter

Peripherals
4x USB 3.0
4x USB 2.0

Display
1x HDMI
1x DisplayPort
1x VGA

Mechanical and environmental

BTU
683 BTU/hr

Operating temperature
50°F to 95°F (10°C to 35°C)

Operating humidity
5 - 90% (non-condensing)

Certifications
Regulatory IEC 60950-1, European Norm EN 60950-1, CISPR 22/CISPR 24, EN55022/55024

Storage

Drive type
3.5" SATA drives

OS drive
1x 256 GB M.2 SSD

Maximum data storage
48 TB

Warranty

Hardware
3-year warranty with 1-year advance replacement and next business day on-site service

Models

Model	Form factor	Dimensions (W x D x H)	Weight	Power supply
SV-300E	Small form factor	3.7" x 11.5" x 11.4" (97 mm x 292 mm x 290 mm)	11.4 lbs (5.1 kg)	180W
SV-300E-T4	Tower	6.95" x 13.58" x 13.19" (176.6mm x 345mm x 335mm)	25.7 lbs (11.7 kg)	460W