



ii-PRO

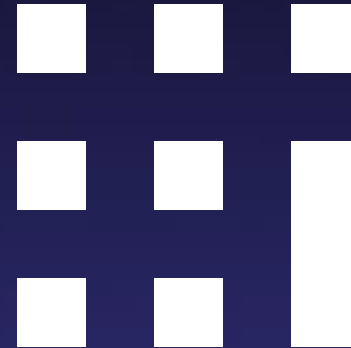
NEW CORNER MOUNT CAMERA

THE MARKET'S **STRONGEST** CORNER MOUNT CAMERA

RELIABLE IK11 70J, **SMART** Edge AI, **SAFE** anti-ligature, **SECURE** FIPS 140-2 level 3



VALUE PROPOSITION



VALUE PROPOSITION

- **1. STRONG :**
 - Shock-resistant withstanding up to 70J impact.
 - Tamper Detection: Impact detection and casing open detection.
 - Stainless steel body exceeding IK11+
- **2. SMART :**
 - Powerful Edge Analytics
 - Supports up to 3 free i-PRO AI applications (e.g., AI VMD, Privacy Guard, People Detection).
 - AI Privacy Guard for ensuring prisoner privacy during monitoring.
 - AI sound detection and yelling detection thanks to a Built-in microphone
- **3. SAFE :**
 - Anti-ligature design to prevent self-harm incidents.



VALUE PROPOSITION

■ 4. SECURE :

- Cyber secure
- Compliant with FIPS 140-2 level 3 for enhanced security.
- Secure boot feature

■ 5. EVERY ANGLE :

- Full Room Video Coverage
- Wide-angle views (131° horizontal, 95° vertical) to limit blind spots.
- Invisible IR-LED for night vision up to 15m@940nm.

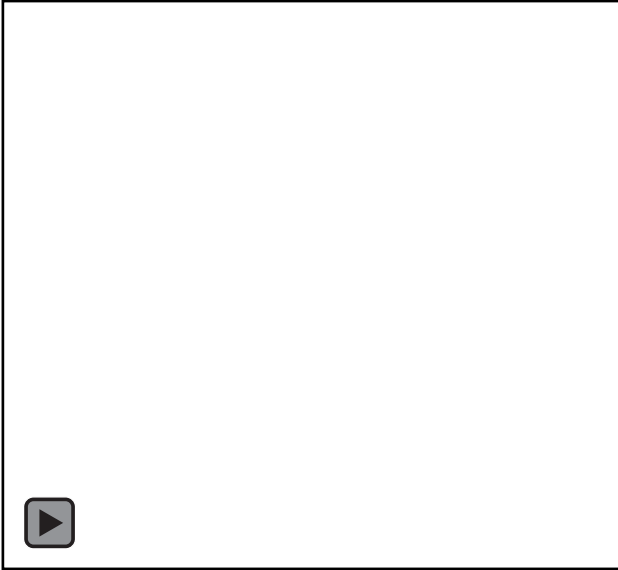
■ 6. Easy Installation and Maintenance:

- Water Repellent & YAW Adjustment:
- Quick and easy cleaning by ClearSight coating with water and dirt resistance.
- YAW adjustment ($\pm 5^\circ$) for flexible and precise angle setup.
- Compact size compared to competitors (197x139x126 mm).
- Dynamic Range of 132dB for clear imaging in various lighting conditions.
- Easy dome cover replacement/
- Easy and Intuitive installation with less parts



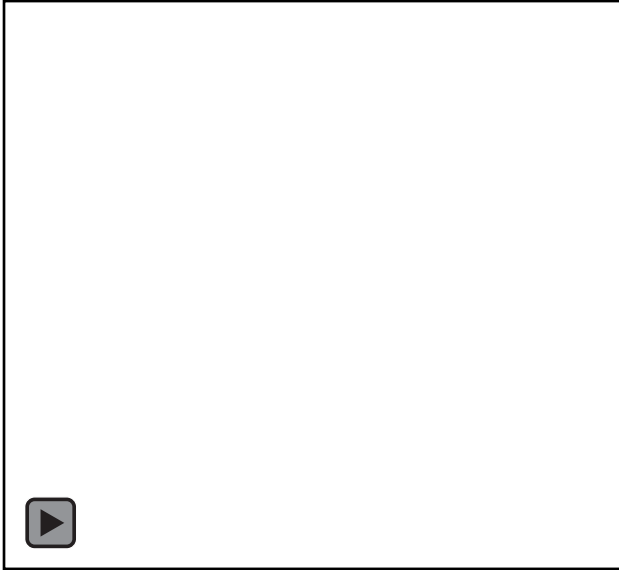
CLEAR SIGHT COATING

Special i-PRO ClearSight coating



Click to watch the video

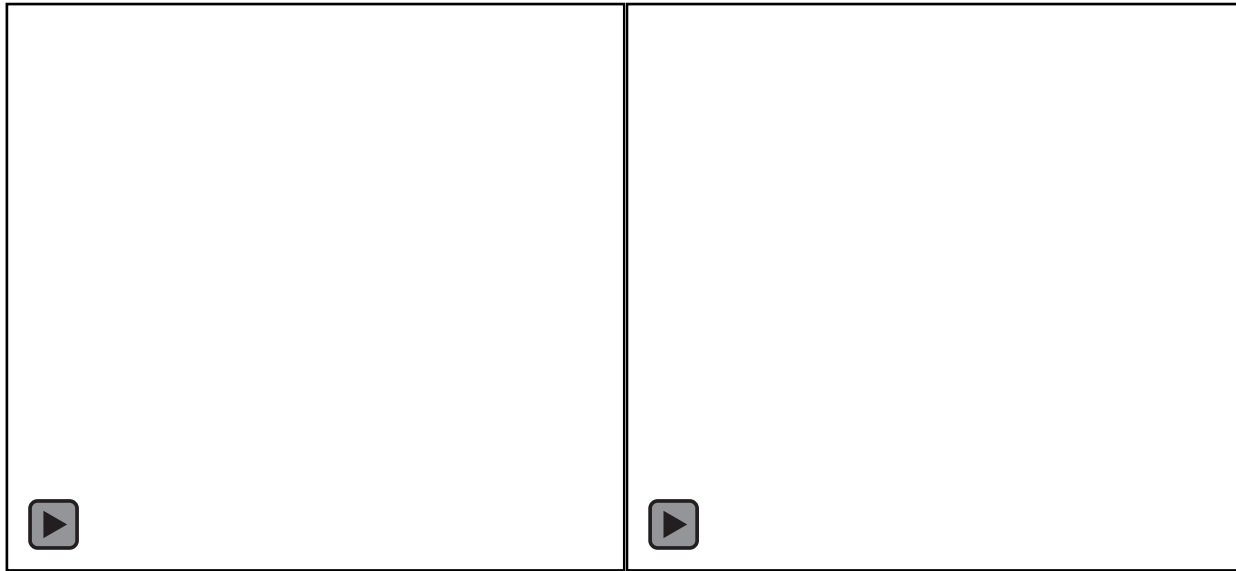
Standard i-PRO ClearSight coating



Click to watch the video

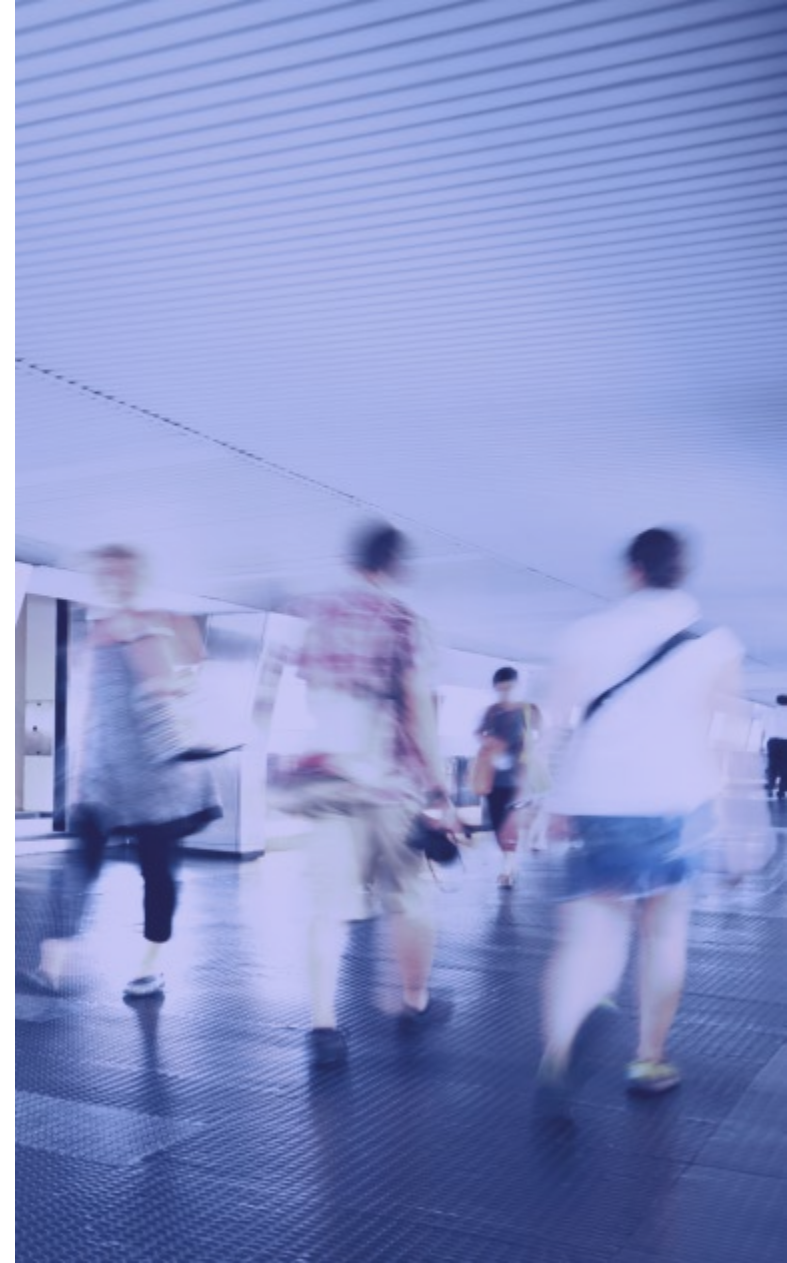


AI PRIVACY GUARD

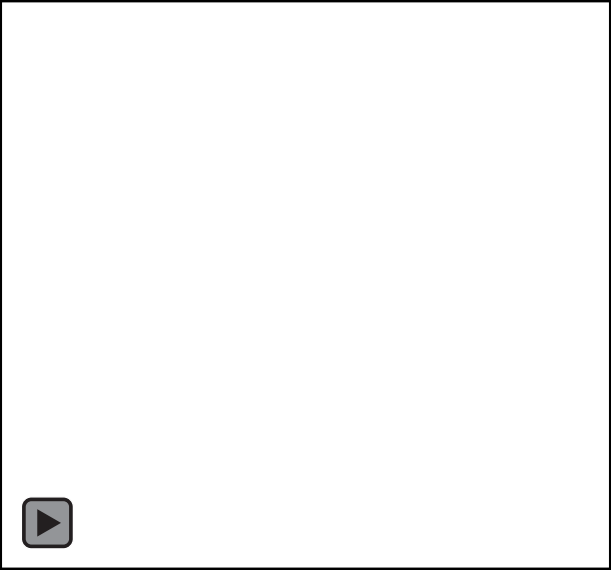
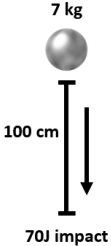


Click to watch the video

Click to watch the video



SHOCK RESISTANCE



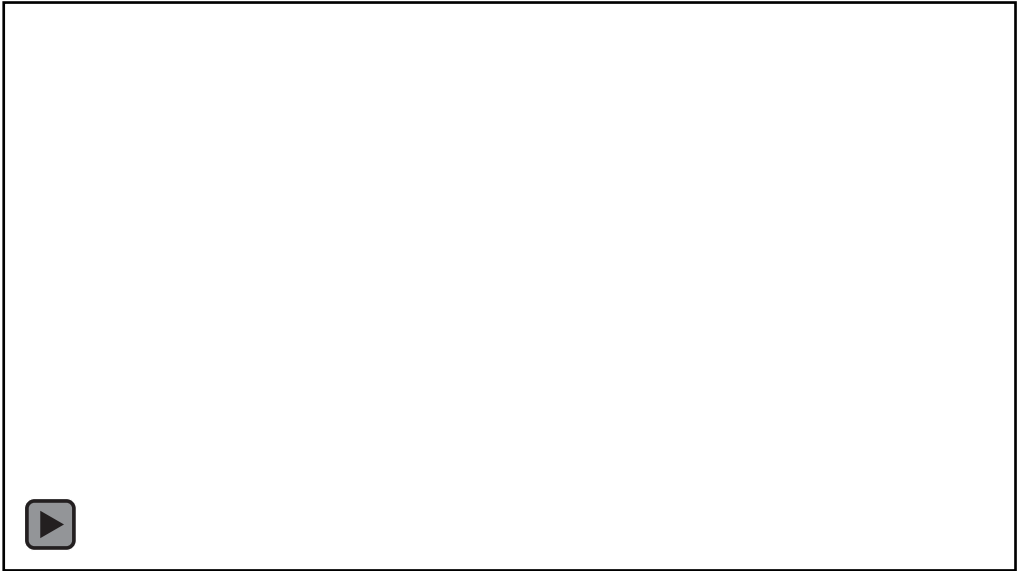
Click to watch the video



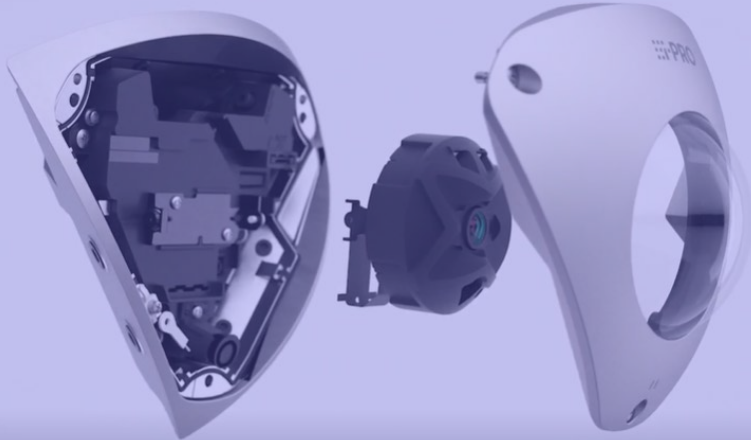
Click to watch the video



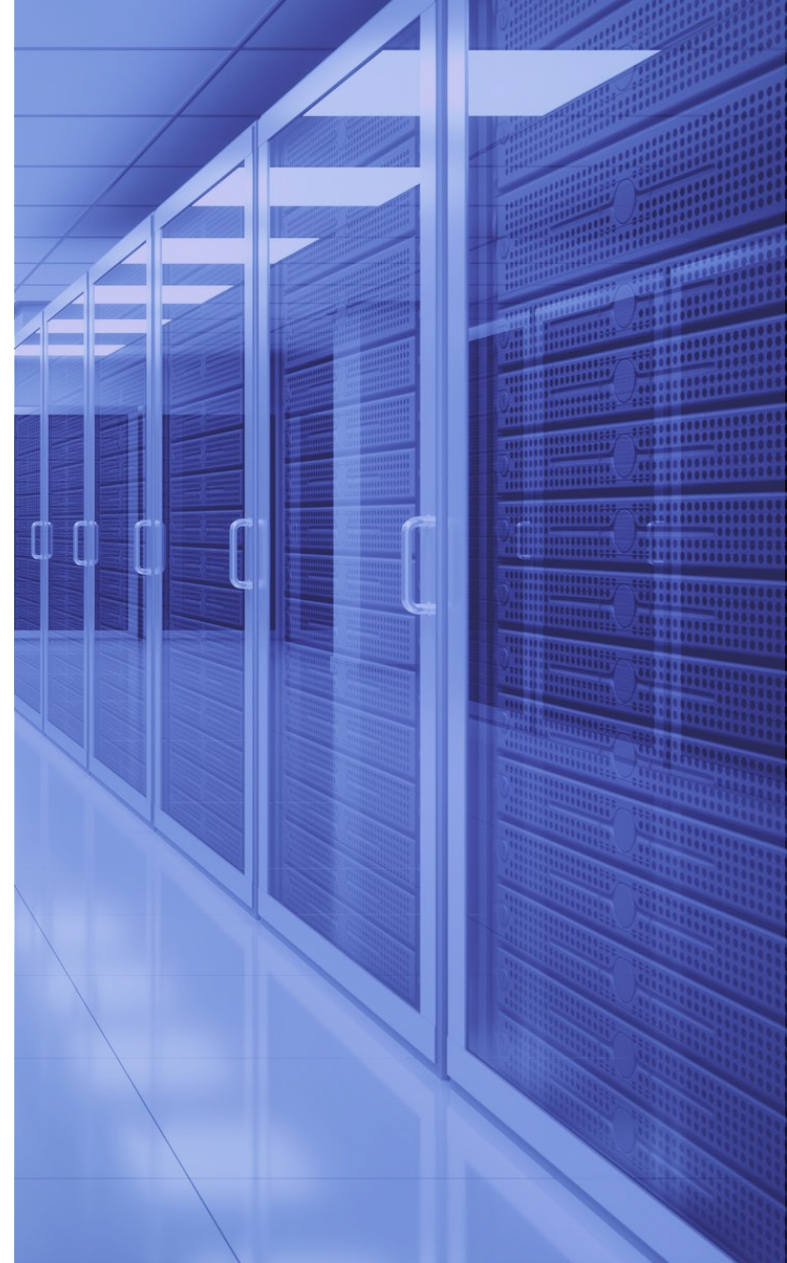
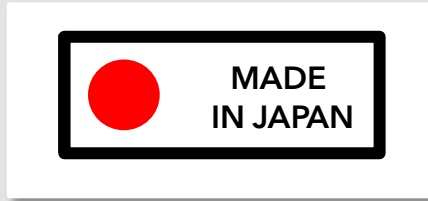
EASY INSTALLATION



Click to watch the video



DATA-SECURITY HIGHEST LEVEL



COMPATIBLE WITH ACTIVE GUARD

i-PRO Active Guard

97%

 ACCURACY LEVEL*

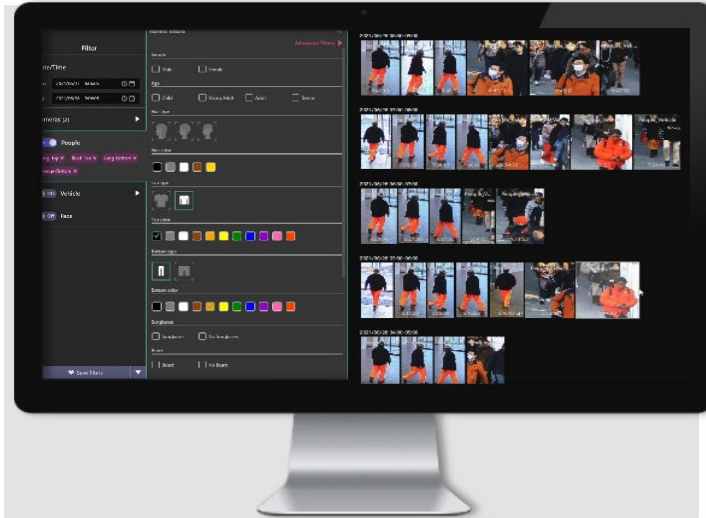
FREE

OF CHARGE
EDGE
ANALYTICS



150+

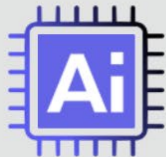
i-PRO
CAMERAS
COMPATIBLE



HIGHEST NUMBER OF ATTRIBUTES

98

ATTRIBUTES ITEMS



EDGE ANALYTICS



FACE



VEHICLE



PEOPLE



PEOPLE COUNTING

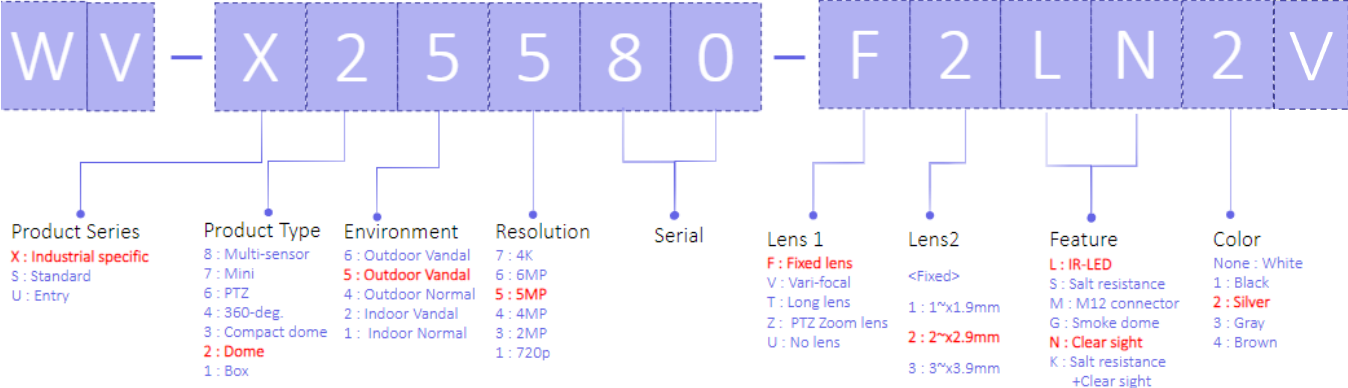
EASY & INTUITIVE



GENERAL INFORMATION



MODEL NUMBER STRUCTURE



BASIC SPECIFICATIONS

Max. Resolution	2560x1920 (5MP)
Max. framerate	30 fps
Angle of view	H:131°, V:95°
IR distance	15m@940nm
Dynamic Range	132dB
Minimum Illumination	0.08lx@30IRE
Vandal	IK11+ (70J)
Water and Dust Resistance	IP66/IP67/ IP69 (IEC 60529), Type 4X (UL50E), NEMA 4X compliant
AI analytics	3 slots (AI-Privacy guard, AI-VMD, AI people detection are pre-installed.)
Secure	FIPS 140-2 level3 / Device Certificate GlobalSign pre-installed / Signed firmware / Brute-force protection



ACCESSORIES



Camera can be installed on the corner directly.



WV-QDC509CN
Clear Dome Cover



WV-QCA500A
RJ45 Ethernet cable



WV-QJB506-B
Base Bracket



WV-QCA501A
Multi cable
(Ext I/O, Audio, DC)

CORNER

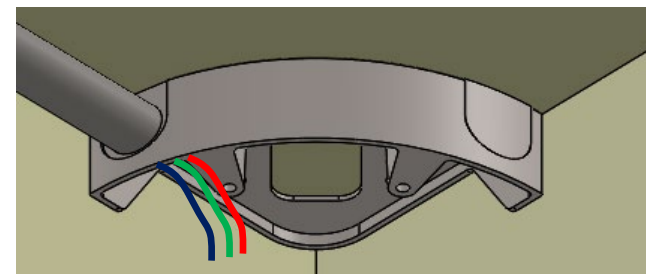
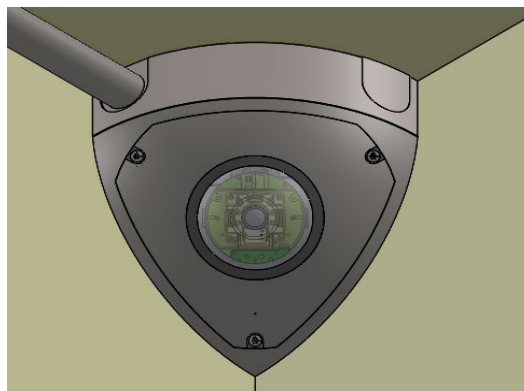


WV-X25580-F2LN2



WV-QJB506-B

(* Real product is black color)



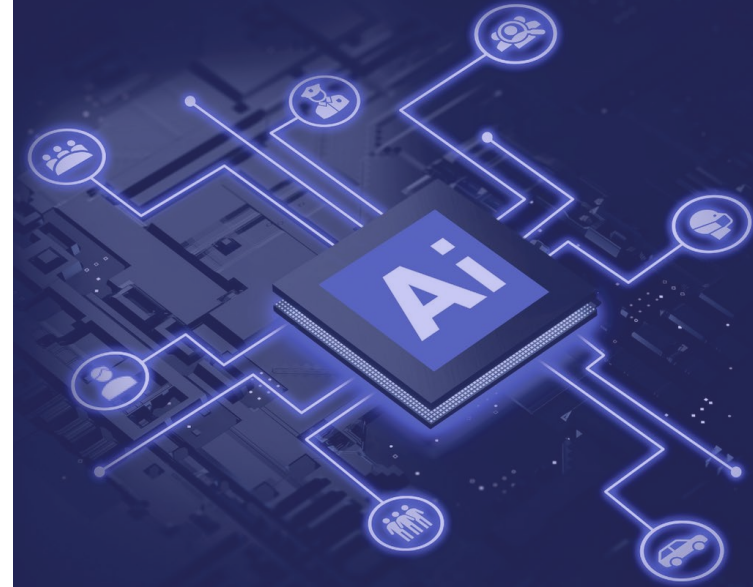
In case the camera is installed on the corner with conduit, WV-QJB506-B is necessary.

*Real product is black color

EDGE AI CAPABILITY

		PRO
AI processor		✓
Ai-VMD	Intruder	Pre-installed
	Direction	Pre-installed
	Cross Line	Pre-installed
	Loitering	Pre-installed
AI People Detection		Pre-installed
AI Privacy guard		Pre-installed
AI Audio Detection		Pre-installed
AI Vehicle Detection		Available
AI Face Detection		Available
AI Non-Mask Detection		Available
AI Occupancy Detection		Available
AI Scene change detection		Available

* Even though 3 apps will be pre-installed, there is a limitation to the number of apps that can be operated at the same time.



LAUNCH SCHEDULE



INTRODUCTION SCHEDULE

June

July

Aug

Sep

Oct

Nov

WV-X Series

WV-X25580-F2LN2V



SECURITY CANNOT WAIT



28 000 units in stock at the factory every month



2 to 4 weeks delivery for products out of stock



2 to 3 Days delivery for products in stock

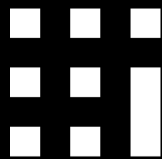


We aim at next day delivery to integrators

Thank you



Linked In page



Website



System Design Tool



YouTube



Product Selector



Application platform



Tech Support



Learning Platform

YOUR TRUSTED NEXT GENERATION PARTNER



PRO